

Design/Build RFP for New Monument Sign

East Williamson County Higher Education Center – Hutto, TX

Project Overview

This RFP will cover the complete design and build function for a new monument sign to be located on the western perimeter bordering SH130 at the East Williamson County Higher Education Center at 1600 Innovation Blvd, Hutto, TX 78634. The following pages indicate a conceptual design that has been agreed upon and is the **basis of the design/build proposal**. All aspects of design, engineering and construction shall be covered under this proposal.

Architectural/Structural

The dimensions of the conceptual design are to be incorporated into the actual design to accommodate 5 spaces for partnership logos. The stone illustrated in the conceptual design shall be equal to that of the stone pre-existing at the main entrance sign into the campus off of Innovation Boulevard. For the structural portion of the sign, a stamped design from a registered engineer in the state of Texas will be required.

Lighting

Provide 2 – 1” conduit runs concealed within sign structure and stubbed at 20’ (mid) and 57’ (top) for future permanent power.

ALTERNATE #1 – Provide a minimum of 2 upper and 2 lower solar powered sign lighting fixtures for front elevation illumination. For an example of what is desired, please visit <http://www.emberled.com/eshine-sign.html>



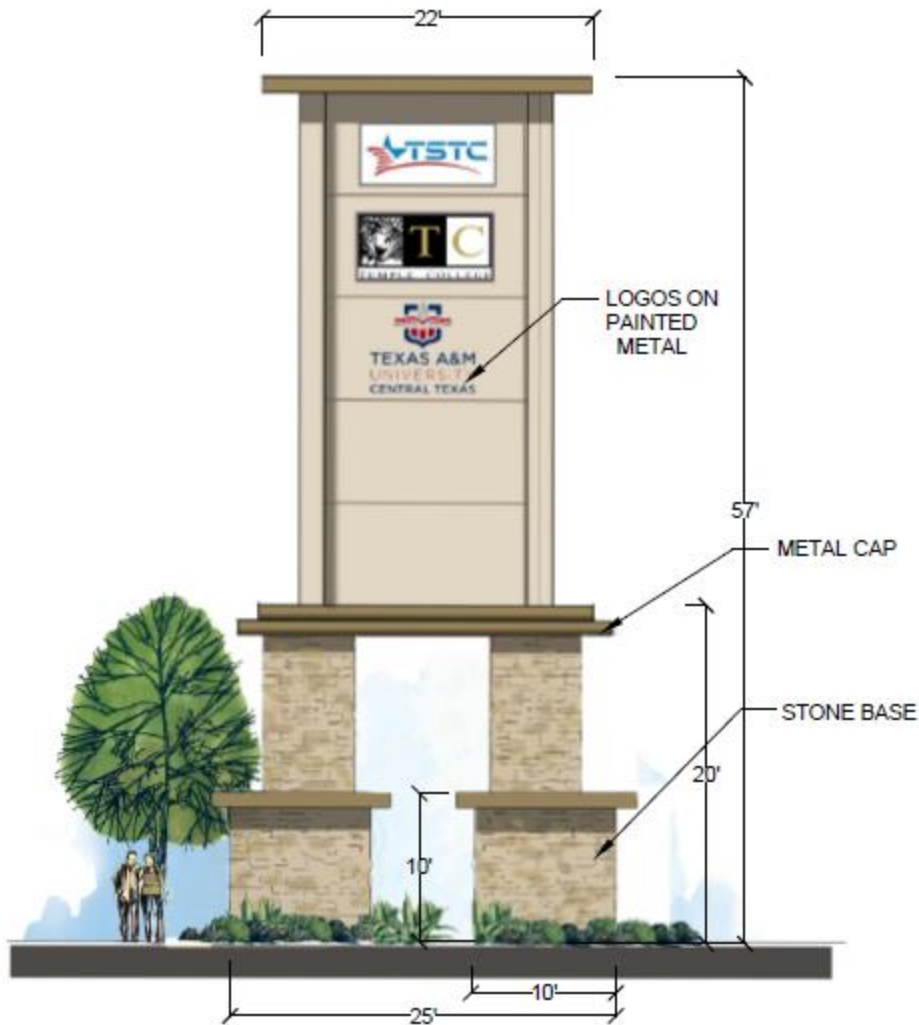
MATERIALS ■ PERFORMANCE ■ SERVICE

Tel: 254-793-2001 Fax: 254-793-2887
 rocksolidstonequarry@yahoo.com
 23680 Firefly Road Florence, TX 76527

Match new stone on monument sign to existing stone at campus entrance. Source of stone is listed above.



RFQ 012115 – Design/Build SH-130 Monument Sign East Williamson County Higher Education Center – Hutto, TX



BASIS OF PROPOSAL

SEC Planning, LLC

Land Planning + Landscape Architecture + Community Branding

AUSTIN, TEXAS

817.324.2102 • 817.324.2102
www.secplanning.com • info@secplanning.com

RFQ 012115



VIEW 'A'



VIEW 'A'



VIEW 'B'

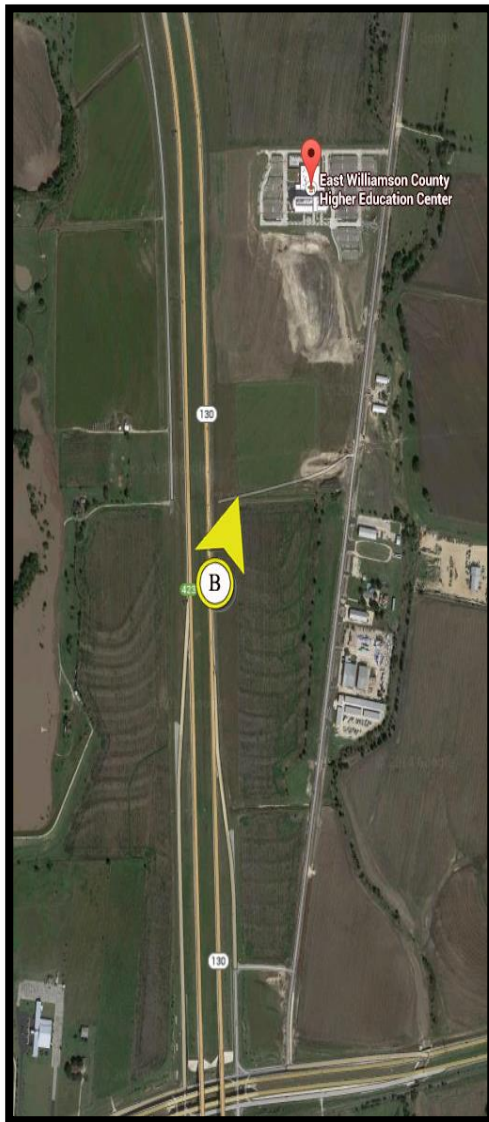
EAST WILLIAMSON COUNTY HIGHER EDUCATION CAMPUS ■ HUTTO, TEXAS

RFQ 012115





VIEW 'A'



VIEW 'B'

EAST WILLIAMSON COUNTY HIGHER EDUCATION CAMPUS ■ HUTTO, TEXAS

RFQ 012115





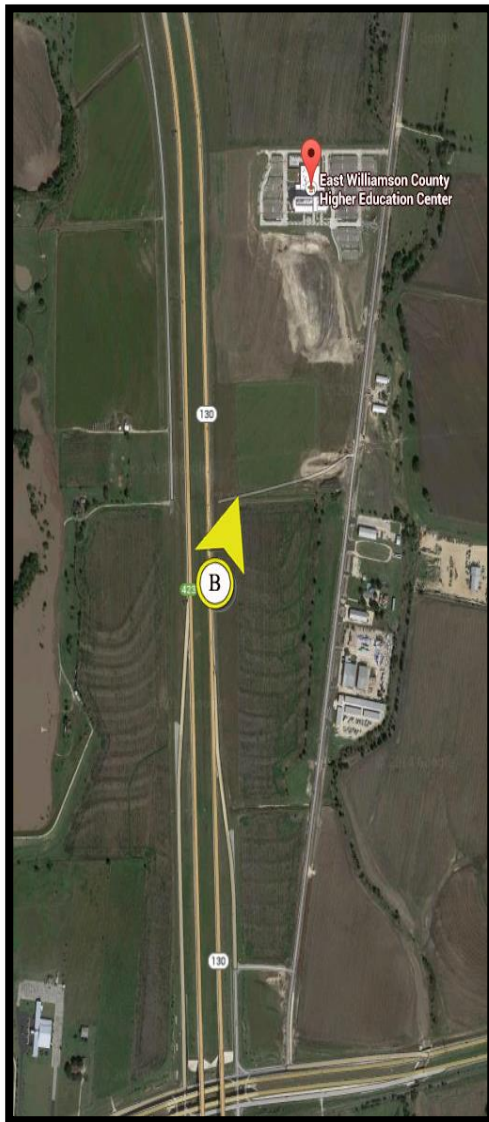
VIEW 'B'



VIEW 'B'



VIEW 'B'



VIEW 'B'



VIEW 'B'



VIEW 'C'

EAST WILLIAMSON COUNTY HIGHER EDUCATION CAMPUS ■ HUTTO, TEXAS

RFQ 012115





VIEW 'C'